

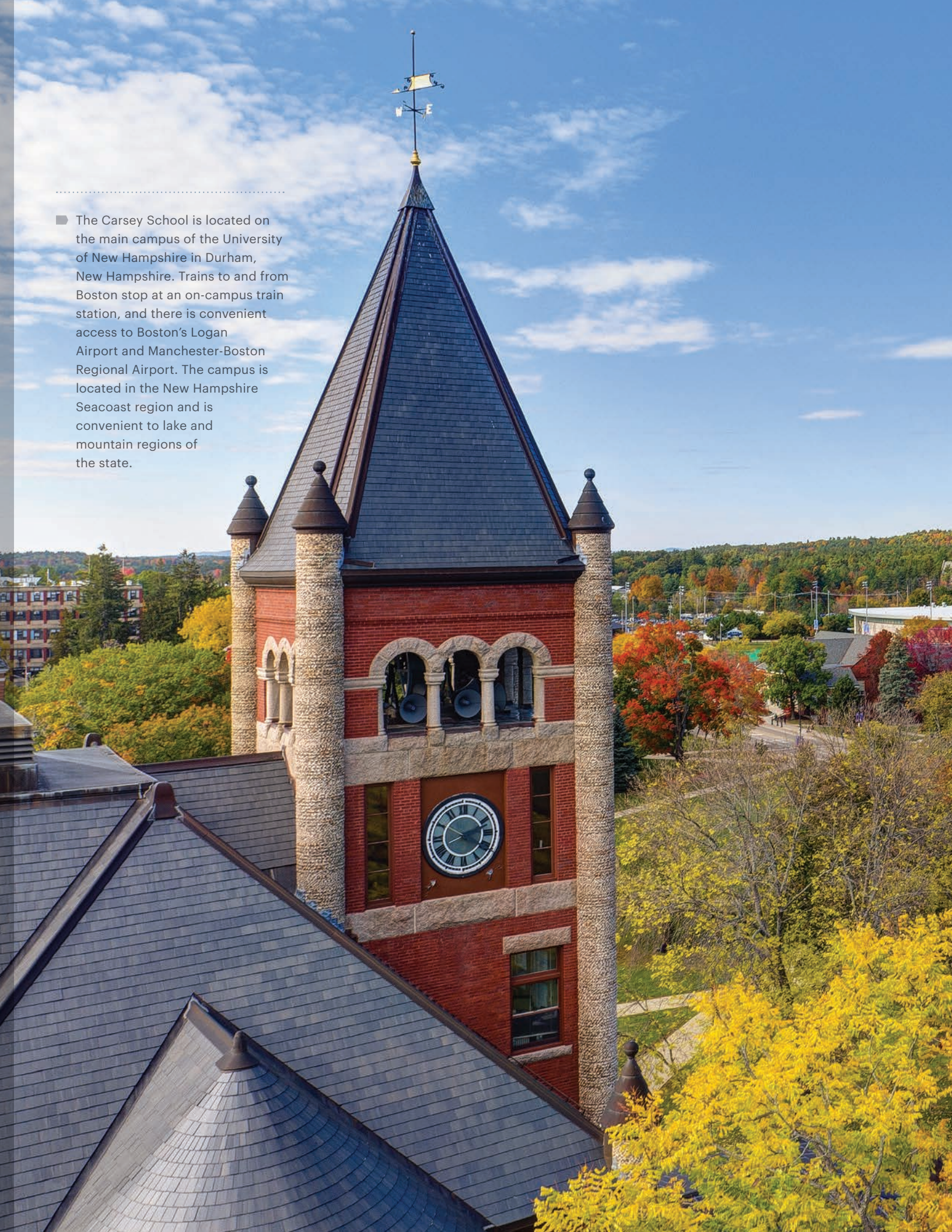
CARSEY SCHOOL ANNUAL REVIEW

2016



University of New Hampshire
Carsey School of Public Policy

■ The Carsey School is located on the main campus of the University of New Hampshire in Durham, New Hampshire. Trains to and from Boston stop at an on-campus train station, and there is convenient access to Boston's Logan Airport and Manchester-Boston Regional Airport. The campus is located in the New Hampshire Seacoast region and is convenient to lake and mountain regions of the state.



ABOUT THE CARSEY SCHOOL OF PUBLIC POLICY

The Carsey School of Public Policy at the University of New Hampshire is nationally recognized for its research, policy education, and engagement aimed at addressing important societal challenges. The school takes on the pressing issues of the twenty-first century, striving for innovative, responsive, and equitable solutions at all levels of government and from the for-profit and non-profit sectors. With an expanding range of degree and non-degree programs, the Carsey School offers a growing number of opportunities for those interested in beginning, or advancing, careers in public policy.



2016

In 2016, the Carsey School of Public Policy welcomed its first Master in Public Policy students, published thirty-four widely read research publications, increased our civic engagement work across the region, welcomed presidential candidates to campus, and celebrated Carsey students winning the New Hampshire Social Venture Innovation Challenge.





Dear Friends, 2016 will go into the history books as a year with a unique political dynamic that has led to a unique policy environment. The ultimate consequences won't be known for years. What is known, however, is that public policy matters; whatever the heat of political campaigns may bring, governing choices have to be made and the better informed those choices are, the better the outcomes for society.

At the Carsey School, we have been working to prepare students for roles they will play in advancing our society. We have also gone to communities and engaged the public in ways that allow differing opinions to be heard and understood. As always, our research helps build understanding of the latest trends in demographics, social safety nets, community economic development, and other areas. In policy, whatever the

political environment, facts always matter, and we bring ours to policy conversations large and small.

We strongly believe that our students are a key to a bright future, as we imbue them with rich understanding and real-world skills. By training these professionals, we prepare them to find answers, win battles, and get things done.

We hope you can support us and help the Carsey School continue to be an important resource for students, policy makers, the public, and communities across the country.

Best wishes,

Michael Ettlinger, Director
Carsey School of Public Policy

Highlights



ANDREW CARNEGIE FELLOWSHIP

Carsey Senior Demographer Ken Johnson received a prestigious Andrew Carnegie Fellowship to advance research in the social sciences and humanities. As a Carnegie Fellow, Johnson is analyzing the continuing impact of the Great Recession on the demographic structure of rural America and its implications for policy.



CENTER FOR IMPACT FINANCE

The new Center for Impact Finance (CIF) was launched by director Michael Swack to broaden access to capital and help turn the tide on widening inequality. CIF conducts research, develops initiatives and policies, designs programs, and implements financing products that improve capital access. CIF is the culmination of a rich Carsey history as a respected leader in the field with a deep record of working directly in communities.



NEW HAMPSHIRE LISTENS

NH Listens engaged local residents and early childhood educators in eight communities across New Hampshire in setting locally identified goals for supporting all young children and their families.

NH SOCIAL VENTURE INNOVATION CHALLENGE

Carsey was thrilled that its MPP students won first place in both the community and student tracks of the NH Social Venture Innovation Challenge with their creative solutions to real-world challenges.



MASTER IN PUBLIC POLICY

This fall we welcomed to campus our inaugural cohort of Master in Public Policy students. Our students arrived from four different continents, sharing the desire to make a difference in the world by analysis, effective communication, and a rich understanding of how to get things done.



MASTER OF ARTS IN COMMUNITY DEVELOPMENT POLICY AND PRACTICE

Now in its sixth year, the Master of Arts in Community Development Policy and Practice students have completed fifty-four community development projects around the world addressing social injustice issues such as homelessness, low income, vulnerable populations, health, education, and the environment.

SOCIAL SECTOR FRANCHISE INITIATIVE

The Center for Social Innovation and Enterprise launched the Social Sector Franchise Initiative (SSFI). SSFI conducts applied research and acts as a convener and clearinghouse for this growing field which uses traditional business franchising models to reach large numbers of customers to fulfill social needs.

VULNERABLE FAMILIES RESEARCH PROGRAM

The Vulnerable Families Research Program continued its research on young children, poverty, and the use of federal social safety nets for families—investigating the extent child care costs put a strain on family income and documenting the critical role the Earned Income Tax Credit plays in supporting low income and poor working families.



ACADEMICS





2016

We welcomed our first cohort of Master in Public Policy students. Classes are being taught by professionals from around the nation immersed in national and international public policy and professors with deep experience in policy analysis. Our Community Development graduate students are working on community-changing capstone projects both nationally and internationally, and our sustainable microenterprise program launched a new online platform. Every day, our students are preparing to engage in public policy across the globe.



Master in Public Policy Students

We welcomed the first Master in Public Policy students this fall. Over 90 percent of our students received generous scholarship support. Four students were awarded Carsey Fellowships in fiscal policy, social innovation, social safety nets, and with NH Listens.

Social Venture Innovation Challenge

The Center for Social Innovation and Enterprise, a joint venture of Carsey and the Peter T. Paul College of Business and Economics, hosted the fourth annual Social Venture Innovation Challenge in December, with 80 contestants competing with business proposals to advance social goals.

Sustainable Microfinance and Development Program

The Sustainable Microfinance and Development Program continued its African Savings Groups training with workshops in Togo and Kenya. SMDP Online is also teaching practitioners across the globe.

New Dual MPP/JD Degree

Carsey and UNH Law jointly created a dual MPP/JD degree for careers that combine legal and public policy skills.

Community Development

Carsey joined with the Opportunity Finance Network to offer certificate programs in Community Development Finance in Durham and Seattle. The training is designed for practitioners in the opportunity finance industry—to enhance their work providing financial services to low-income communities.

"Semester in the City" Program

The Center for Social Innovation and Enterprise offered a new Semester in the City program for UNH students interested in working with social change organizations in Boston for a semester.



RESEARCH

Clean Water Integrated Planning Quality Goals

Allison Watts, Robert

Summary

Rising populations and in New Hampshire coastal decline in water quality in responding effectively to permit requirements for stormwater and wastewater solutions from communities. In 2015, the Water Integration (WISE) project completed a framework through which Exeter, Stratham, and Newburyport manage permits for water. However, meeting reduction will require collaboration from all municipalities in regulated under the Clean

Introduction

The New Hampshire Great Falls of the tidal rivers that impacted by human development. The Region Estuaries Partnership or negative conditions of twenty-two indicators of ecosystem health of the estuary by the New Hampshire Department of Environmental Services (NHDES) on measures. Though nitrogen and phosphorus, excess ammonia, and sediment, and ultimately. Permits now issued by

Should Dating Amon

Kristin Smith

The Special Survey of Women, Infants, and Children (SIP) shows that millions of low-income children who are at risk of malnutrition or psychological current or future, defined from sexual abuse between a parent and a child are or have been sexually abused. Research has shown that aggression perpetrate to perpetrate and, since factors, a targeted Research associate consequ develop and sex One nized a aggress educat pants of of data recover ences. progr factor. Howe sexual

Fewer Than WIC Benef

Kristin Smith

The Special Survey of Women, Infants, and Children (SIP) shows that millions of low-income children who are at risk of malnutrition or psychological current or future, defined from sexual abuse between a parent and a child are or have been sexually abused. Research has shown that aggression perpetrate to perpetrate and, since factors, a targeted Research associate consequ develop and sex One nized a aggress educat pants of of data recover ences. progr factor. Howe sexual

Research has shown that aggression perpetrate to perpetrate and, since factors, a targeted Research associate consequ develop and sex One nized a aggress educat pants of of data recover ences. progr factor. Howe sexual

In 2015, the \$43.58 per person buying nutritious food for other necessities. Families with the federal poverty line, WIC benefits families, as the urban areas (in 2014).⁵ It influences by placing women perception in 2014.⁷ The Current Policy

Despite the of families in 2014.⁷ The Current Policy

Forests The Effect in New Eng

Mark J. Ducey, et al.

Summary

The New England states have lost more than 50 percent forest cover since 1920. The region has lost an estimated 100 million acres of forest. The loss of forest cover has significant impacts on the environment, including increased erosion, reduced water quality, and loss of habitat for wildlife. The loss of forest cover has also led to a decline in the number of jobs in the forestry sector. The loss of forest cover has also led to a decline in the number of jobs in the forestry sector. The loss of forest cover has also led to a decline in the number of jobs in the forestry sector.

Demograph of Immigr Rural and

Andrew Schaefer

In recent years, the changing demographic composition and increased immigration have led to a decline in the number of jobs in the forestry sector. The loss of forest cover has also led to a decline in the number of jobs in the forestry sector. The loss of forest cover has also led to a decline in the number of jobs in the forestry sector.

Our analysis different the urban imm demograph education

Our analysis different the urban imm demograph education

U.S. Births Remain Low as the More Than Three Million Fewer Births

Kenneth M. Johnson

The Great Recession sent an economic shock through American society that reached far beyond the stock and housing markets. More than five years after economists announced the end of the recession, fertility levels have still not recovered. As a result, more than 3.4 million fewer babies were born in the United States between 2008 and 2015 than would have been expected if pre-recession fertility rates had been sustained (see Figure 1). In each of the last five years, this birth deficit has resulted in roughly 500,000 fewer births.

FIGURE 1. ACTUAL BIRTHS COMPARED TO BIRTHS USING 2007 BIRTH RATES, 2008 TO 2015



Nor do new data just released show any evidence of an upturn in births. National Center for Health Statistics data for 2015 show the lowest general fertility rate on record and only 3,978,000 births last year. There were 338,000 (8 percent) fewer births in 2015 than in 2007, just before the Recession began to influence fertility. This decline in

births is entirely due to a decline in the number of women aged 15-44. In 2015, there were 39 million women aged 15-44, down from 42 million in 2007. The decline in the number of women aged 15-44 is due to a combination of factors, including a decline in the birth rate and a decline in the number of women aged 15-44. The decline in the number of women aged 15-44 is due to a combination of factors, including a decline in the birth rate and a decline in the number of women aged 15-44.

Over 80 Support

Kristin Smith

Paid family and medical leave programs are becoming more common. In a winter 2016 Granite State Survey, 80 percent of respondents said they supported paid family and medical leave. The survey also found that 70 percent of respondents said they supported paid family and medical leave. The survey also found that 70 percent of respondents said they supported paid family and medical leave.

Although New Hampshire has a paid family and medical leave program, it is not as robust as those in California, New Jersey, and New York. The survey also found that 70 percent of respondents said they supported paid family and medical leave. The survey also found that 70 percent of respondents said they supported paid family and medical leave.

Men Strongly Support Than Women

New Hampshire residents

After a Parent Left Children Lost Private Health Insurance

Kristin Smith

Parental job loss is a significant source of child poverty. In a winter 2016 Granite State Survey, 80 percent of respondents said they supported paid family and medical leave. The survey also found that 70 percent of respondents said they supported paid family and medical leave. The survey also found that 70 percent of respondents said they supported paid family and medical leave.

The growth of public coverage, notwithstanding, private coverage for children's health insurance is declining. In 2012, the share of children with private health insurance was 14 percent. By 2015, that share had declined to 7 percent. The decline in private health insurance coverage for children is due to a combination of factors, including a decline in the birth rate and a decline in the number of children with private health insurance.

Hispanic Children Least Likely to Have Health Insurance Citizenship, Ethnicity, and Language Barriers to Coverage

Michael J. Staley and Jessica A. Carson

This policy brief examines health insurance coverage of Hispanic children and its relationship to their citizenship status, their parents' citizenship status, parents' insurance coverage, language spoken at home, and their state's Medicaid expansion policies.

Hispanic Children Are Least Likely to Have Health Insurance

In 2014, 94 percent of U.S. children had health insurance. Although this is a record high for children's coverage, 4.3 million children still remain without health insurance, and Hispanic children make up a disproportionate share of this group. Hispanic children have historically had the highest rates of uninsurance among children of any racial/ethnic group. In 2014, the most recent year for which data are available, 95.4 percent of non-Hispanic white children, 95.3 percent of black children, and 94.4 percent of multiracial children had health insurance coverage. In comparison, only 90.3 percent of Hispanic children were covered, leaving more than 1.7 million Hispanic children uninsured. Hispanic children in rural areas are less likely to have health insurance than Hispanic children in urban areas (94 percent versus 12.2 percent, respectively).

Nearly 40 percent of all uninsured children are Hispanic, although Hispanic children make up only 24.3 percent of children in the United States (see Figure 1). By contrast, though nearly 52 percent of U.S. children are non-Hispanic white, they comprise only 40 percent of uninsured children. Non-Hispanic children account for 40 percent of uninsured children in the United States.

KEY FINDINGS

- Hispanic children are less likely to have health insurance than black or white children, a gap that is explained by differences in citizenship status between Hispanic and non-Hispanic children.
- Noncitizen Hispanic children are nearly three times more likely to be uninsured than Hispanic citizen children living with insured parents.
- Hispanic children who do not have an insured parent are seven times more likely to be uninsured than Hispanic children with at least one insured parent.
- Children in states that expanded Medicaid are less likely to be uninsured than children in non-expansion states, although low and moderate income children are more likely to be uninsured regardless of state expansion status.

Children's Citizenship Status Is a Key Driver of Hispanic Children's Uninsurance

Ethnicity is related to several factors, including lower rates of insurance.

2016

We take pride in the wide reach of our researchers' findings. In 2016, over 100,000 downloads of our work informed policy makers, journalists, fellow researchers, and advocates across the globe. We covered a wide range of issues: child poverty, access to clean water, immigration, paid family leave, access to health insurance, and more. As ever, we strive to bring objective, rigorous analysis to complicated topics, providing policy makers and the public with the information they need for the advancement of good public policy.



■ **CARSEY'S RESEARCH** is disseminated through dozens of original applied research publications each year. The most read 2016 publications were:

- Child Poverty Higher and More Persistent in Rural America
- First in the Nation: New Hampshire's Changing Electorate
- U.S. Births Remain Low as the Great Recession Wanes: More Than Three Million Fewer Births and Still Counting
- Fewer Than Half of WIC-Eligible Families Receive WIC Benefits
- Demographic and Economic Characteristics of Immigrant and Native-Born Populations in Rural and Urban Places
- Exclusionary Discipline Highest in New Hampshire's Urban Schools: Suspension and Expulsion Found to Disproportionately Affect Disadvantaged Students
- Carsey Perspectives: Saving Salt, Protecting Watersheds, in Winter Road Maintenance. Highlights from a Social Venture Innovation Challenge Winner
- Forests in Flux: The Effects of Demographic Change on Forest Cover in New England and New York
- The Unmet Need for Care: Vulnerability Among Older Adults
- Clean Water for Less: Integrated Planning Reduces the Cost of Meeting Water Quality Goals in New Hampshire
- White Deaths Exceed Births in One-Third of U.S. States

To see the full list, please see pages 20–21. To download or read online, visit carsey.unh.edu.



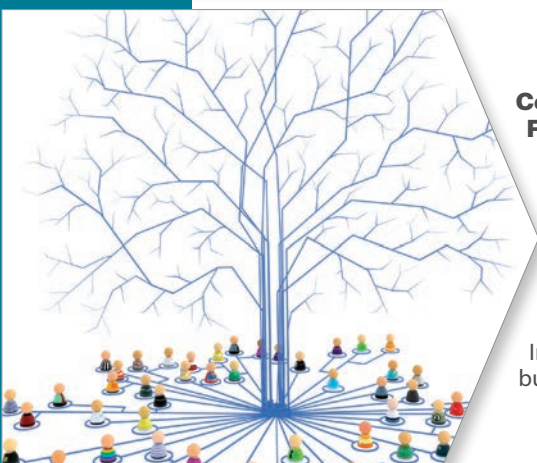
Evaluation Team

Carsey's Evaluation team, through the UNH Education Department, is analyzing the effectiveness of a major new U.S. Department of Education initiative to prepare elementary and secondary STEM teachers to teach in rural high need communities.



Coös Youth Study Team

The Coös Youth Study team presented its latest research on supporting positive outcomes for teens to North Country New Hampshire professionals whose work impacts youth and young adults.



Center for Impact Finance

The Center for Impact Finance conducted research on opportunities for Community Development Finance Institutions in online business lending.



Vulnerable Families Team

Carsey's Vulnerable Families team analyzed families' child care expenses and found one in four families with young children are "burdened" with the costs, spending more than 10 percent of their income on child care.

ENGAGEMENT





2016

Carsey connects the rigor of academic research and training to communities and the nation. Whether working in New Hampshire or around the world, while facilitating important community dialogue, connecting to the national policy scene, or bringing research and policy leaders to campus: Carsey engages.





Presidential Candidates

UNH welcomed many presidential candidates and their supporters throughout the year including President Barack Obama, V.P. Joe Biden, Dr. Ben Carson, Gov. Chris Christie, Sec. Hillary Clinton, Sen. Lindsay Graham, Gov. John Kasich, Gov. Martin O'Malley, Sen. Rand Paul, Sen. Bernie Sanders, Jill Stein, and Sen. Elizabeth Warren.



Community Development Investing

Carsey's Center for Impact Finance partnered with the U.S. Federal Reserve to host a meeting on linking impact investing dollars with on-the-ground community development.



NH Beverage Summit

NH Listens hosted the first ever NH Beverage Summit at Bretton Woods to discuss priorities for the industry across a variety of viewpoints.



Workplace Policies

Carsey Family Demographer Kristin Smith was a keynote speaker, discussing workplace policies at the New Hampshire Women's Foundation Summit: Winning Workplaces, Pathways to Paid Family and Medical Leave Insurance.



Improving Community Health

With the Public Health Institute, Carsey's Center for Impact Finance brought together leaders from community development financial institutions and health systems to target needed capital investments to improving community health.



Addressing Climate Change

The Conservative Case for Acting on Climate: Why Putting a Price on Carbon Matters—Jerry Taylor, president of the Niskanen Center, came to the Carsey School to discuss the conservative and moral imperative for addressing climate change—and how it should be done.

Carsey Publications

WINTER

First in the Nation: New Hampshire's Changing Electorate

— Kenneth M. Johnson, Dante J. Scala, Andrew Smith

The Impact of Financial Products and Services on Quality of Life

— Michael Swack

After Years of Decline, Private Health Insurance Rates Among Children Grew in 2014

— Michael J. Staley

Child Poverty Higher and More Persistent in Rural America

— Andrew Schaefer, Marybeth Mattingly, Kenneth M. Johnson

Exclusionary Discipline Highest in New Hampshire's Urban Schools: Suspension and Expulsion Found to Disproportionately Affect Disadvantaged Students

— Douglas Gagnon, Eleanor M. Jaffee, Reeve Kennedy

Carsey Perspectives: Saving Salt, Protecting Watersheds, in Winter Road Maintenance: Highlights from a Social Venture Innovation Challenge Winner

— Andrew Jaccoma

SPRING

The Unmet Need for Care: Vulnerability Among Older Adults

— Rebecca Glauber, Melissa Day

Clean Water for Less: Integrated Planning Reduces the Cost of Meeting Water Quality Goals in New Hampshire

— Alison Watts, Robert Roseen, Paul Stacey, Renee Bourdeau, Theresa Walker

Forests in Flux: The Effects of Demographic Change on Forest Cover in New England and New York

— Mark Ducey, Kenneth M. Johnson, Ethan P. Belair, Miranda H. Mockrin

After a Parent Left Employment, One in Five Children Lost Private Insurance

— Kristin Smith

Carsey Perspectives: Is the Poverty Rate 1.1 Percent?

— Michael Ettlinger, Andrew Schaefer

U.S. Births Remain Low as the Great Recession Wanes: More Than Three Million Fewer Births and Still Counting

— Kenneth M. Johnson

Was December Warm? Family, Politics, and Recollections of Weather

— Lawrence Hamilton, Mary Lemcke-Stampone

SUMMER

Hispanic Children Least Likely to Have Health Insurance: Citizenship, Ethnicity, and Language Barriers to Coverage

— Michael J. Staley, Jessica Carson

Fewer Than Half of WIC-Eligible Families Receive WIC Benefits

— Kristin Smith

Carsey Perspectives: Water Concerns Unite Citizen Activists: A Community Rights Movement Transcends Party, Age, and Gender

— Cliff Brown

Over 80 Percent of New Hampshire Residents Support Paid Family and Medical Leave Insurance

— Kristin Smith

Carsey Perspectives: Bridging Farm and Table: The ‘Harvest to Market’ Innovation

— Andrew Walters, Edie Allard

Overall Declines in Child Poverty Mask Relatively Stable Rates Across States

— Andrew Schaefer, Jessica Carson, Marybeth Mattingly

Paid Family and Medical Leave in New Hampshire: Who Has It? Who Takes It?

— Kristin Smith, Nicholas Adams

FALL

Demographic and Economic Characteristics of Immigrant and Native-Born Populations in Rural and Urban Places

— Andrew Schaefer, Marybeth Mattingly

Where Is the North Pole? An Election-Year Survey on Global Change

— Lawrence Hamilton

Most U.S. School Districts Have Low Access to School Counselors: Poor, Diverse, and City School Districts Exhibit Particularly High Student-to-Counselor Ratios

— Douglas Gagnon, Marybeth Mattingly

Child Care Costs Exceed 10 Percent of Family Income for One in Four Families

— Marybeth Mattingly, Andrew Schaefer, Jessica Carson

CDFIs and Online Business Lending: A Review of Recent Progress, Challenges, and Opportunities

— Jack Northrup, Eric Hangen, Michael Swack

White Deaths Exceed Births in One-Third of U.S. States

— Rogelio Sáenz and Kenneth M. Johnson

The Impact of State Medicaid Expansion Under the Affordable Care Act on Health Insurance Coverage at the County Level

— Danielle C. Rhubart

Funders & Funding

FISCAL YEAR 2016

GRANTS

Annie E. Casey Foundation
 Anonymous
 Appalachian Mountain Club
 Carnegie Corporation—Andrew Carnegie Fellows Program
 Coös County Family Health Services
 County of Cheshire
 DAI - Europe Ltd.
 Experimental Program to Stimulate Competitive Research (EPSCoR)
 Ford Foundation Institute on International Education
 Foundation for Healthy Communities
 John T. Gorman Foundation
 John D. and Catherine T. MacArthur Foundation
 Health to Health Strategies of New Hampshire, Inc.
 Maine Community Foundation
 The MasterCard Foundation
 National Science Foundation
 NeighborWorks America
 Neil & Louise Tillotson Fund of the New Hampshire Charitable Foundation
 New Hampshire Charitable Foundation
 New Hampshire Department of Employment Security, Economic and Labor Market Information Bureau
 New Hampshire Department of Health and Human Services, Division of Public Health Services, Bureau of Community Health Services, Maternal and Child Health Section
 New Hampshire Endowment for Health
 New Hampshire Kids Count, Inc.
 Omaha Community Foundation

The Paul J. Aicher Foundation
 The Pittsfield Youth Workshop
 Plymouth State University
 Robert Wood Johnson Foundation
 Russell Sage Foundation
 Tri-County Head Start
 U.S. Department of Agriculture – Forest Service, Northern Research Station
 U.S. Department of Health & Human Services, Administration for Children and Families – Office of Planning Research and Evaluation
 U.S. Department of Labor, Women's Bureau
 University of Maryland
 University of New Hampshire Agricultural Experiment Station
 University of New Hampshire Cooperative Extension

GIFTS

The Bamford Flat Iron Group LLC
 Mary Johanna Brown
 Marcy Carsey
 Deutsche Bank
 Melanie Higgins Dostie
 Cynthia M. Duncan
 Kris E. Durmer, Esq
 Michael P. Ettlinger
 John W. Greene
 Curt D. Grimm
 Susan D. Halloran
 The F.B. Heron Foundation
 E. Michele Holt-Shannon
 Impact Community Capital
 J. Morgan and Tara Rutman
 Kenneth M. Johnson
 The Kresge Foundation

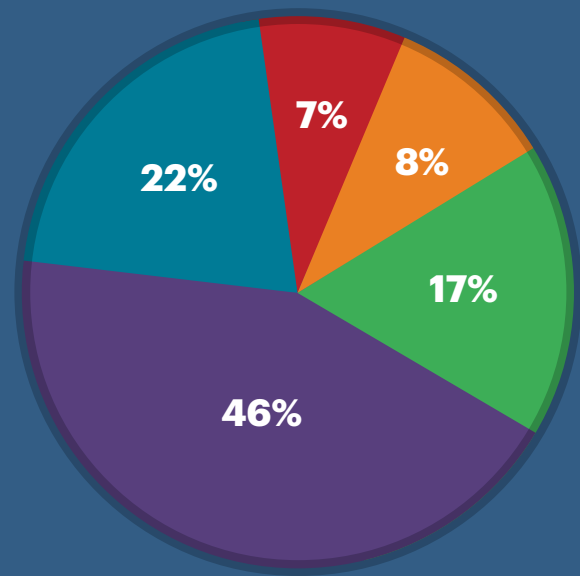
John D. and Catherine T. MacArthur Foundation
 William O. Maddocks
 Misty E. McCarty
 Susan Y. McDonough
 Maureen Miller
 Kenneth Monahan
 New Hampshire Charitable Foundation – Thomas W. Haas Fund
 New Hampshire Community Loan Fund, Inc.
 Jennifer Higgins Pitre
 Janet E. Prince
 Resident Ownership Network, LLC
 Mel Rines
 Diane L. Schaefer
 Jon Shure
 Kaitlyn E. Smith
 Amy K. S. Sterndale
 Joseph Sudbay
 Wal-Mart Stores Inc. (Sam's Club)
 Stephen Wood

CONTRACTS

Arts Alliance of Northern New Hampshire
 Beer Distributors of NH
 City of Berlin
 Coalition of Union Employees of NH/SEIU Local 1984
 Post-Landfill Action Network
 Second Start
 Rhode Island Facilitation Lab

FISCAL YEAR 2016

The single largest source of Carsey School of Public Policy revenue in 2016 continued to be the grant funding we received for our research, academic, and public engagement programs. We also continued to benefit from generous gifts from individual supporters. Our academic programs are supported by tuition, with scholarship funds supplemented with grants and gifts. Our endowment provided an important source of core funding.



Revenue Sources

Grants	46%
Miscellaneous	22%
Gifts	17%
Endowment	8%
Academic Programs.....	7%

2016



University of New Hampshire
Carsey School of Public Policy

HUDDLESTON HALL
73 MAIN STREET
DURHAM, NH 03824
carsey.unh.edu