



WORKFORCE HOUSING COALITION

— OF THE GREATER SEACOAST —



**Opening Doors to
Vibrant Communities**

Who We Are

The Seacoast Workforce Housing Coalition envisions an adequate supply of desirable, attainable, and quality housing options throughout the greater seacoast region, providing opportunities for members of the workforce to put down roots and live, work, and play in the community they love.

The Workforce Housing Coalition believes housing is key to creating and sustaining diverse communities, rich in social, cultural, political, and economic opportunities for present and future businesses, employees, and families.

Through a united coalition of business, municipal, and community leaders, our mission is to ensure the development of a range of housing options available and affordable to members of the diverse workforce of the greater seacoast region.



Our Housing Design Charrette Program

The Coalition's signature Workforce Housing Design Charrettes transform the way we work together by broadening a host community's capacity for collaboration. Each charrette is a hypothetical thought exercise that harnesses the talents and energies of a volunteer team of architects, engineers, bankers, and others in the housing industry.

The objective of each charrette is to help municipal leaders identify the barriers to the development of financially-feasible workforce housing. The charrette team is encouraged to challenge local land-use regulations and present design options that inspire change and spark a community-wide conversation.

Final reports from past charrettes are available on our website under the "resources" tab.

What is Workforce Housing?

Workforce housing is a term that is used to describe a broad range of owner-occupied and rental housing that is affordable to the individuals and families that represent the majority of a diverse workforce.

New Hampshire statute R.S.A. 674:58-61 defines workforce housing as for-sale housing affordable to a household earning no more than 100 percent of the area median income and rental housing affordable to a household earning no more than 60 percent AMI.

More Importantly, Who is Workforce Housing?

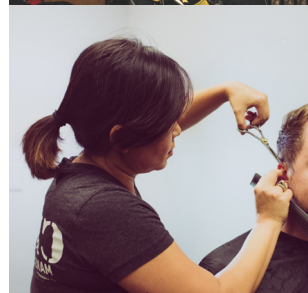
Workforce housing provides homes to recent college graduates, police officers and firefighters, healthcare workers, those working in the restaurant and retail industries, skilled laborers, shop owners, municipal employees, teachers, and empty-nesters looking to downsize. These workers provide the benefits and services we associate with a desirable place to live.

Ensuring there are housing options available to these folks, provides them the opportunity to establish roots and become part of the community where they live, work, and play.

The greater seacoast is one of the least affordable regions in the country. The area's lack of affordable housing supply is a leading reason why young people are leaving the state. As a result, New Hampshire employers are struggling to recruit and retain young talent.

Support the Coalition today by becoming a member or sponsoring an event. Find out more about membership and sponsorship opportunities on our website under the "support" tab.

Connect with the Coalition today to find out about opportunities to advocate for workforce housing in your community.



Communities We Serve

Maine

Acton
Arundel
Berwick
Eliot
Kennebunk
Kennebunkport
Kittery
Lebanon
North Berwick
Ogunquit
Sanford
South Berwick
Wells
York

New Hampshire

Barrington
Brentwood
Candia
Chester
Danville
Deerfield
Dover
Durham
East Kingston
Epping
Exeter
Farmington
Fremont
Greenland
Hampton
Hampton Falls
Kensington
Kingston
Lee
Madbury
Milton
New Castle
Newfields
Newington
Newmarket
Newton
North Hampton
Northwood
Nottingham
Portsmouth
Raymond
Rochester
Rollinsford
Rye
Sandown
Seabrook
Somersworth
South Hampton
Strafford
Stratham



www.seacoastwhc.org



Sarah Wrightsman,
Executive Director
director@seacoastwhc.org

Workforce Housing Coalition
57 Main Street
Raymond, NH 03077

